

Socio-economic value of goods and services provided by Mediterranean forest

Why is Mediterranean forest so important?

- 77 million ha of forests (= 2% of total world's forest area) in the Mediterranean countries provide valuable goods and services.
- **Climate Change pressure:**
The Mediterranean region is one of the most prominent climate change “hot spot” [5th IPCC]. In the period 2006-2010, over 2 million ha of wildlands were burnt, an average of more than 400 000 ha per year.
- **Anthropogenic pressure:**
Growth of population with 95% in south-eastern Mediterranean countries



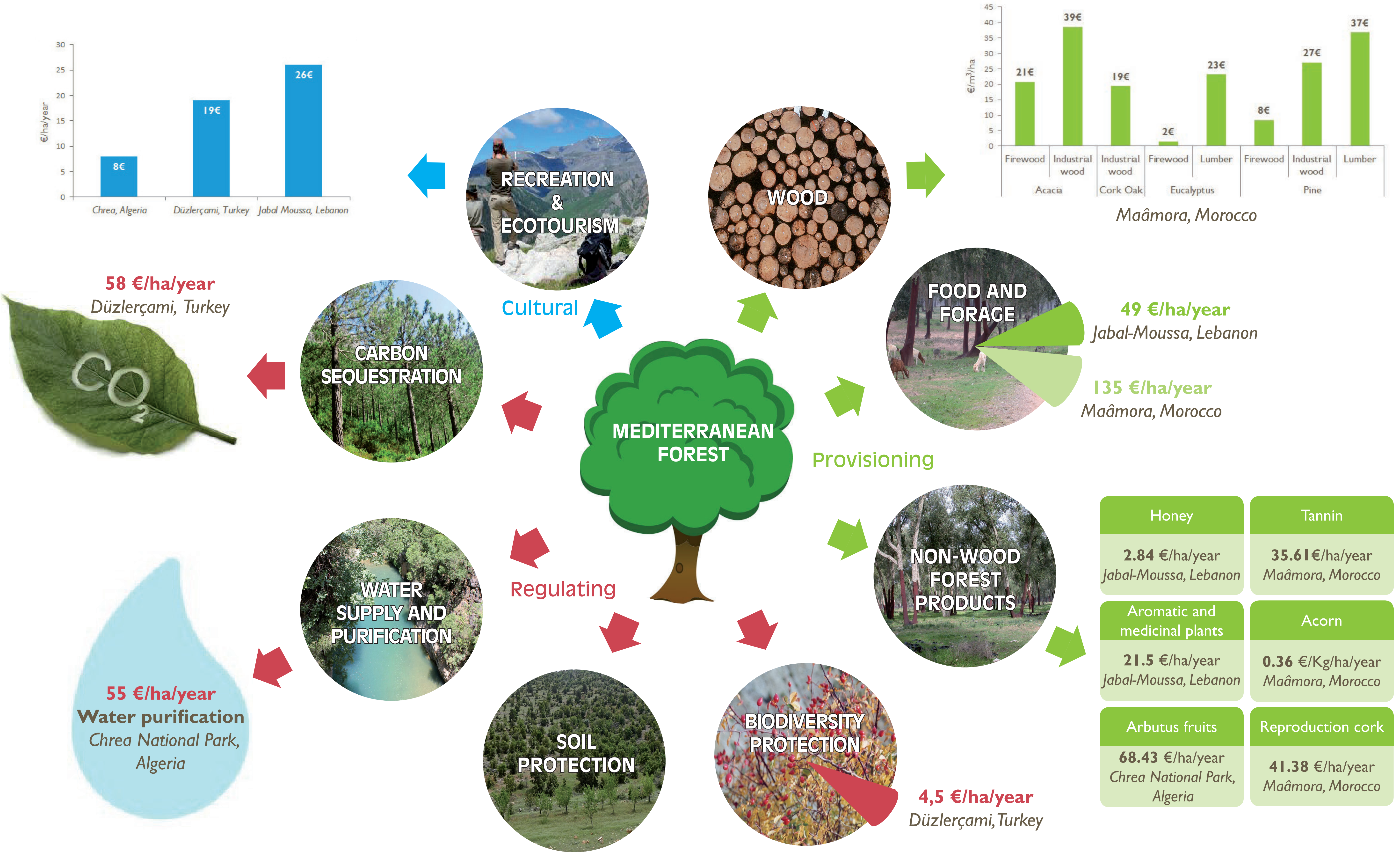
Pilot sites of the project funded by the FGEF



▶ If unmanaged, such changes could have serious consequences for the provision of goods and ecosystem services.

Mediterranean forest's goods and services, what are they worth?

Some examples in pilot sites



▶ More information: http://planbleu.org/en/activites/foret/socio_economic_value_forest

What challenges remain?

- **Regarding ecosystem services**, the socio-economic changes of recent decades triggered by urbanization and increases in living standards **have increased their importance**. (protection of soil and water, protection against erosion and desertification, carbon sequestration, biodiversity conservation, tourism and recreational activities).
- **Use of the economic assessment of forest goods and services:**
 - provide better understanding of changes in provision of those goods and services,
 - demonstrate the contributions of forests to social welfare and economic development,
 - take into account not only priced goods, but also non-market good and services.
- Assessing this value is a starting point for **elaborating proposals and supporting effective decision making** with regard to adaptive and sustainable management of Mediterranean forest ecosystems
- These assessments can be used in the future as the basis for the implementation of: a **natural resource accounting system**, a **PES system** and an **effective compensation mechanisms of damages on forest**.