

Call for applicants: Support for the production of factsheets and technical paper on supporting decision-making in Mediterranean Wetlands and Rivers

CALL FOR APPLICANTS:

Support for the production of factsheets and technical paper on supporting decision-making in Mediterranean Wetlands and Rivers

***IN THE FRAMEWORK OF PANACEA PROJECT: A REGIONAL INITIATIVE OF
STREAMLINING MANAGEMENT EFFORTS IN PROTECTED AREAS FOR AN ENHANCED
PROTECTION IN THE MEDITERRANEAN SEA***

Call for applicants: Support for the production of factsheets and technical paper on supporting decision-making in Mediterranean Wetlands and Rivers

Background information

Plan Bleu is participating in the Interreg MED Horizontal project PANACeA - Streamlining Management efforts in Protected Areas for enhanced nature conservation in the Mediterranean, funded by the Interreg MED Programme.

PANACeA fits in the Interreg MED Priority Axis 3: "Protecting and promoting Mediterranean natural and cultural resources"; specifically contributing to the Specific Objective 3.2 of the programme: "To maintain biodiversity and natural ecosystems through strengthening the management and networking of protected Areas".

The Interreg MED programme is a transnational European Cooperation Programme for the Mediterranean area. It is co-financed by the ERDF (European Regional Development Fund), an instrument of the EU regional policy and of its new programming period.

Brief description of the scope of the project

The objective of PANACeA is to streamline networking and management efforts in Mediterranean Protected Areas (PAs) as a mechanism to enhance nature conservation and protection in the region.

The project aims at ensuring synergies between relevant Mediterranean stakeholders –including managers, policymakers, socio-economic actors, civil society and the scientific community –, and to increase the visibility and impacts of their projects' results towards common identified strategical targets.

PANACeA builds a community of nature conservation stakeholders in the Mediterranean and acts as the Communication and Capitalisation instrument of the projects within the Interreg Med dealing with protection of biodiversity and natural ecosystems. Through its tool, the Interreg Med Mediterranean Biodiversity Protection Knowledge Platform, PANACeA ensures the transfer of synthesised projects' outcomes and their dissemination across and beyond the region.

The main thematic focus areas include coastal and marine management, biodiversity monitoring, sustainable use of natural resources, management of protected areas, climate change, governance, cooperation and scientific and innovative methodologies, under the umbrella of a series of projects: ACT4LITTER (marine waste in marine protected areas), AMARe (marine spatial planning and PAs), CONFISH (network of fish stock recovery areas), ECOSUSTAIN (water quality monitoring solutions in protected wetlands), FishMPABlue2 (governance of artisanal fisheries in protected areas), MEDSEALITTER (marine litter impact on biodiversity), MPA-ADAPT (adaptation of MPAs to climate change), PlasticBusters MPAs (preserving biodiversity from plastics in Mediterranean Marine Protected Areas), PHAROS4MPAs (Blue Economy and Marine Conservation: Safeguarding Mediterranean MPAs in order to achieve Good Environmental Status), POSBEMED (strategy for joint management of Posidonia beaches and dunes), WETNET (wetland governance) and additional projects to be included in the coming period.

In-depth information on the project objectives, approach and expected outcomes can be found on the following link: <http://planbleu.org/fr/activites/milieu-marin/panacea-une-initiative-regionale-de-rationalisation-en-matiere-defforts-de>

PANACeA working structure

In order to develop its strategy and action plan, PANACeA developed a conceptual framework (figure 1) and structured these synergies into a workflow to be developed under three main working groups:

Call for applicants: Support for the production of factsheets and technical paper on supporting decision-making in Mediterranean Wetlands and Rivers

- WG1. Biodiversity management and protection, with an emphasis on comprehensive ecosystem-based management approaches that addresses increasing cumulative and transboundary threats including climate change and marine litter;
- WG2. Sustainable use of natural resources, with an emphasis on co-management practices and small-scale fisheries;
- WG3: Integrated ecosystem monitoring and management, with an emphasis on the connections and integrated management between inland (freshwater), coastal and marine ecosystems

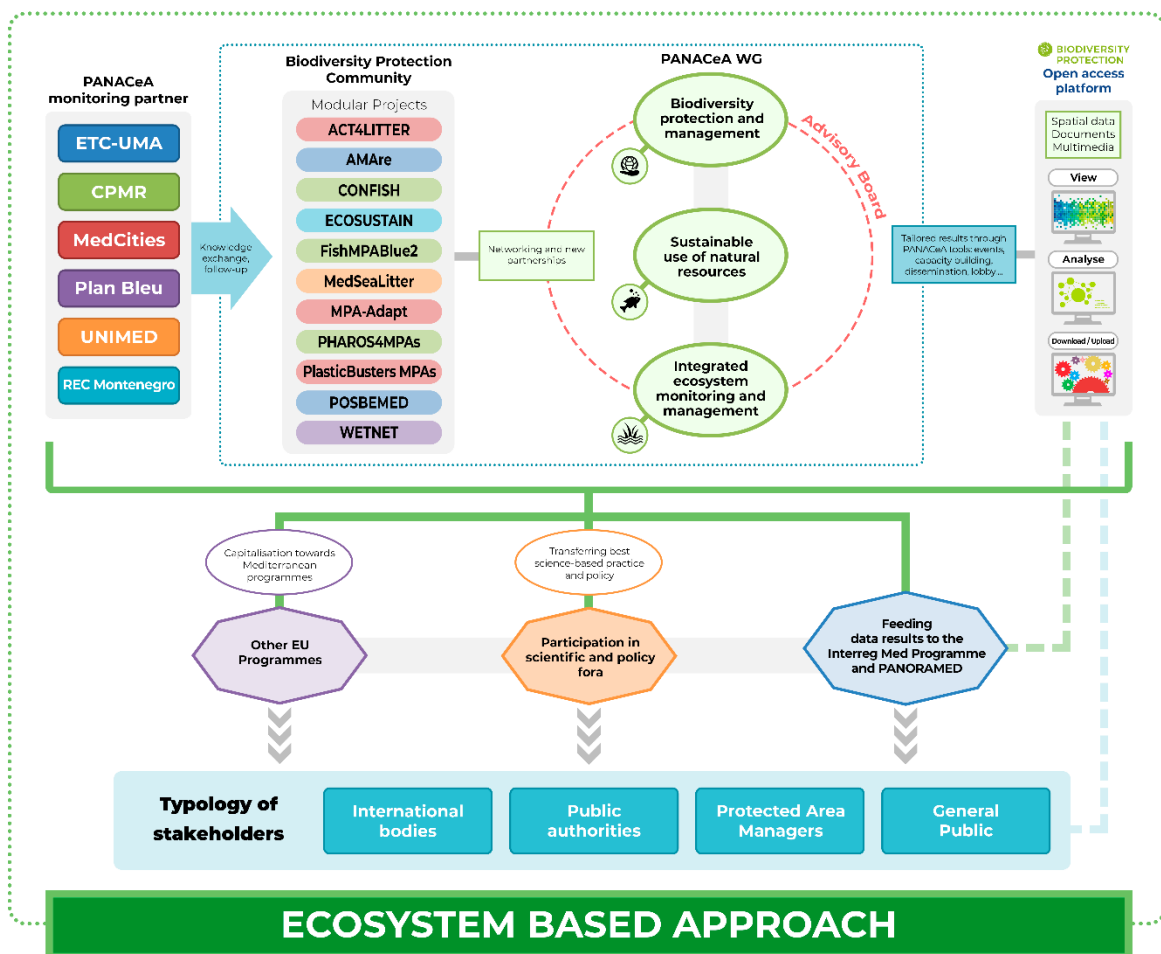


Figure 1. PANACeA conceptual framework for action

Factsheets have been developed for each working group to describe the specific purposes and targets they intend to reach. They can be found at the following link:
<http://planbleu.org/en/activites/milieu-marin/panacea-regional-initiative-streamlining-management-efforts-protected-areas>

As such, the PANACeA project strives to establish a direct dialogue with the main policy and management stakeholders to highlight the need for science-based management practices for the maintenance and growth of biodiversity and the associated ecosystem services.

In this framework, Plan Bleu is responsible for working group 3: integrated ecosystem monitoring and management.

Call for applicants: Support for the production of factsheets and technical paper on supporting decision-making in Mediterranean Wetlands and Rivers

This working group aims to address key challenges for the Mediterranean in relation to integrated ecosystem monitoring and management, contributing to a better understanding of land-sea interactions and wetland ecosystems. In concrete, WG3 focuses on:

- a. Promoting an integrated governance for sustainable management of Protected Areas (PAs). WG3 focuses on strengthening monitoring and management tools in PAs. Beyond PAs, to contribute to the UN Environment MAP Integrated Monitoring and Assessment Programme (IMAP).
- b. Collecting the data generated by the projects to feed the MED Biodiversity Protection Community Knowledge Platform as well as existing permanent database of protected areas at Mediterranean level (e.g. MAPAMED) and ultimately support the production of cartography for Marine Spatial Planning (MSP).
- c. Providing spatial data for MSP combining conflicting priorities: based on the projects' pilot site results and their strategies for transferring these results, WG3 efforts will strive to showcase Land Sea Interaction (LSI) management tools, such as MSP and integrated coastal zone management (ICZM).

Scope of these terms of reference

The first and main product of WG3 is the realization of factsheets and technical papers on land sea interaction and wetlands monitoring and management solutions. These documents will concentrate the modular projects' results on both topics, in order to be disseminated towards their corresponding policy target groups (eg: Ramsar Convention, MSPD, Habitats Directive, etc.). A detailed map of WG3 policy target groups is available [here](#).

The scope of these Terms of Reference is to select an expert to provide services for writing the factsheets and the technical paper on wetland and river management and monitoring.

The main steps of this work are the following:

1. Implementation and animation of a virtual working group allowing the sharing and the collection of modular projects results.
2. Realization of a first factsheet to present the scope of the modular projects, linking them with policy or territorial needs (previously identified by PANACeA partners in the WG factsheet and in the policy targets mapping). This first factsheet will also present the actions that are being developed to reach the target groups of PANACeA and of the modular projects. Methods, protocols on wetlands monitoring and management implemented, and recommendations for the implementation of such protocols can be showcased in this first factsheet.
3. Realization of a second factsheet highlighting the main results obtained by the modular projects through the tools they implemented.
4. Realization of a technical paper of the community on wetlands management and monitoring in the Mediterranean: methods, implemented protocols, results, recommendations.

The factsheets and technical paper will include results from the modular projects of the PANACeA community, as well as relevant results from other projects and studies.

In concrete, the selected expert is expected to:

- Moderate a virtual working group gathering: representatives of the Interreg MED modular projects involved in WG3 focusing on wetlands and river, PANACeA partners in charge of the working group

Call for applicants: Support for the production of factsheets and technical paper on supporting decision-making in Mediterranean Wetlands and Rivers

(Plan Bleu and Montenegro Regional Environment Center), PANACeA advisory board and associated partners, and it will be opened to other interested projects and partners.

- Write a first factsheet on wetlands and river management and monitoring showcasing methods, protocols implemented in wetlands (specifying in which context projects are implemented, according to the topics and issues addressed by the projects), recommendations and “midterm” results matching this information with the targets of WG3; reshaping it in the most relevant way according to the policy target group.
- Write a second factsheet on wetlands and river management and monitoring highlighting the identified key issues and topics of interest of the policy target groups (from documents and work already produced by PANACeA partners) , advanced results and recommendations, shaped according to the identified policy needs.
- Write a technical paper on wetlands and river management and monitoring to be transferred to the different policy target groups of the working group, in order to feed into the different identified policy processes. The sources of this paper will be the projects of the Interreg MED community, the PANACeA knowledge platform, the conclusions and recommendations of the capitalization events of the MED biodiversity protection community, as well as relevant information from other projects and studies.

More information can be found on the scope and policy target groups of working group 3 in the [factsheet](#) attached in annex of this document.

Policy target groups and policy needs have already been identified by PANACeA and will be at the disposal of the expert to shape the factsheets and technical paper.

Deliverables and calendar

WORKLOAD

The expert is expected to start working **mid November 2018 and end 30th of July 2019**. The following table describes the estimated workload.

| Deliverables | Number of days |
|------------------------------------|----------------|
| Scoping meeting with Plan Bleu | 1 |
| Moderation virtual working group | 5 |
| Drafting 1 st factsheet | 6 |
| Drafting 2 nd factsheet | 6 |
| Drafting policy paper | 8 |
| Total | 26 |

DELIVERABLES CALENDAR

- 1st virtual meeting – 15th November to 30th November 2018
- The first draft of the factsheet #1 is expected 15th December 2018
- Final draft of Factsheet #1 is expected 15th January 2018
- 2nd virtual meeting – 1st February to 15th February 2019

Call for applicants: Support for the production of factsheets and technical paper on supporting decision-making in Mediterranean Wetlands and Rivers

- The first draft of the factsheet #2 is expected 28th February 2019
- Final draft of Factsheet #2 is expected 31st March 2019
- 3rd virtual meeting – 1stth April to 15th April 2019
- The first draft of the technical paper is expected 15th May 2019
- Final draft of technical paper is expected 30th June 2019

This calendar is indicative and the deadlines can be modified along the project, but won't be extended later than the 31st July 2019.

WORK ORGANIZATION

Each of the above described steps will be validated by Plan Bleu. Regular calls and meetings (face to face or by skype depending on the expert location) with Plan Bleu and/or other PANACeA partners will be planned during the activities development to ensure a smooth development of the tasks and that the results are adapted to the needs.

Selection of the expert

- Masters or PhD or equivalent degree in Environmental studies or relevant area
- Previous relevant experience in biodiversity protection, and specifically on wetlands
- Experience in the Mediterranean region strongly desired and a good knowledge of actors and governance processes in Mediterranean countries
- Familiarity with the modular projects and the INTERREG program will be an added advantage
- Strong conceptual and synthesis ability combined with good writing and communication skills
- Ability to mobilize information and existing knowledge in an efficient way
- Relevant project and publications references
- Fluency in English as well as proven technical writing skills is required.

The selection of the expert will be done based on a presentation of a letter of interest and CV accompanied by an economic offer making reference to these Terms of Reference.

CONTRACTUAL AND FINANCIAL TERMS

The acceptance of the offer of the successful tender will implicate the acceptance of the conditions and schedules detailed in this ToR.

A duly-issued invoice will be required for payment at the presentation of the final document. The payment term for the invoice will be: bank transfer 15 days after the invoice date (bank account details should be detailed)

The tax legislation in force at the date of acceptance of the offer will be applied.

INTELLECTUAL PROPERTY

In the spirit of cooperation and exchange, the ownership of the work covered by the contract related to this ToR and co-funded by the Interreg MED Programme is open to the public and free of rights.

The deliverables and results of the project should be accessible and available for free to the general public in a usable format. The MA/JS and any other relevant Programme stakeholder can use them for information and communication purposes.

The authorship of the work covered by the contract related to this ToR is co-shared between the author and all the partners of the project.

Call for applicants: Support for the production of factsheets and technical paper on supporting decision-making in Mediterranean Wetlands and Rivers

How to apply

- Applications must be submitted no later than **15th November 2018.**
- Applications must be submitted by e-mail to:

Ms. Nelly Bourlion
"Forest Ecosystems and Biodiversity" programme officer
E-mail : nbourlion@planbleu.org